

# CREAMS,



# CAKES,



**The Eagle  
Historical  
Society &  
Dalmyra  
Eagle  
Community  
Band  
proudly  
present...**

**Our July  
Concert  
salute to  
summer  
heat and  
summer  
treats:  
Creams,  
Cakes &  
Cabarets!**

**featuring  
vocalist  
"Kimbirdlee"**

**Sunday 2pm  
July 7, 2013  
Village Park  
CABARET,  
Eagle,  
Wisconsin**

# & CABARETS

# Today's Performers & Composers



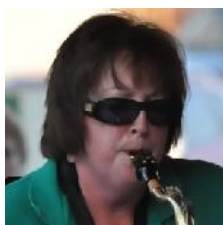
**"Kimbirdlee" (Kimberly Fadner).** Kimberly Fadner "Kimbirdlee" is a performing and visual artist who grew up in Hales Corners, WI and lived in Oakland, CA with her husband and 1-yr old son, "Jackrabbit" up until this summer. "The 40s: A Sentimental Journey" and her ongoing collaboration with PECB marks a special time for Kimbirdlee and her family as they spread their wings and make NYC their home in Fall, 2013. Kimbirdlee's natural gift as a singer was discovered as a young girl and she was in musicals with local Milwaukee-area theaters at an early age. Her first big roles were Amahl in "Amahl and the Night Visitors" and Marta in "Sound of Music" when she was only 7 years old. She was soon dubbed the singer of the family and sang for many special events, often with her father singing and playing along on guitar. Kimberly majored in Vocal Performance & Dance at Mills College in Oakland, CA and acting at the American Conservatory of Theater-SF. She appeared in West Coast productions including "It's a Grand Night for Singers" at Jarvis Conservatory in Napa, "Forever Broadway" at Herbst Theater, "Working: The Musical" at ACT-SF, Marin Shakespeare Company's "The Tempest", Berkeley Playhouse's "Cinderella: Enchanted", "Narnia", "Born and Raised" & "Seussical The Musical". She worked with the Berkeley Playhouse, and 142 Throckmorton as an actress, aerialist, director and teacher for several years. Her performance in "Seussical" earned her a Bay Area Theater Critics Circle Award nomination in 2012 and a guest performance at the Palace of Fine Arts in SF. Kimberly performs and records with her husband Jonathan Fadner and brother Matt Miller in The Kimbirdlee Fadner Trio & La Boheme. She is a soloist for various churches, as well. Here's to spreading joy and inspiration through music and the arts.



**Bob Miller and Jim Neist:** **Bob Miller** has been playing Baritone horn with the band since 1998, as well as providing occasional vocal support for selected favorites. Although a pediatrician and hospital administrator (retired) by profession, music has always been a part of Bob's life, whether with community bands and choruses, or at home with his children Matt and Kimberly. "Singing duets with Kimberly is always a joy!" he notes. Bob and Kim sing together on "Don't Sit Under the Apple Tree (With Anyone Else But Me)" on the CD. **Jim Neist** has been principal first trumpet with the Palmyra-Eagle Community Band for over a decade. His rendition of Andrews Sisters classic Boogie Woogie Bugle Boy on trumpet is a PECB concert favorite. He also leads the PECB feature ensemble the Kettle Moraine Blues, and he has orchestrated and arranged music both for that ensemble, and the larger band. His arrangement of Les Brown/Doris Day's "Sentimental Journey" is the final selection and provides the theme for our compact disc "The 1940s: A Sentimental Journey."



**The Kettle Moraine Blues:** The KMB, composed of Jim Neist--director and trumpet, Ellie Hawes--Saxophone, Gina Neist--Clarinet, Todd Kienitz--Trombone, Deb Gilbert--Keyboard, Jim Nelson--Tuba, and Nancy Campbell--Percussion, is the Palmyra-Eagle Community Band feature ensemble, performing at most concerts and events. They bring their unique blend of artistic virtuosity, musical risk-taking, and "Joe-Cool"-blues attitude to everything they play: from old standards like Basin Street Blues, and The Entertainer Theme, to less-familiar aural treats like the Hawaiian War Chant and The Theme for the Addams Family. Deb Gilbert and Gina Neist from the KMB also perform a duet on the PECB CD of the beautiful melody by Antonin Dvorak "Coming Home," from his Symphony No. 9, the "New World Symphony."



**Deb Gilbert and Ellie Hawes:** **Deb Gilbert** is the PECB lead flute player and KMB keyboardist, as well as our quick-change piccolo player for band favorites like Sousa's Stars & Stripes Forever. She plays the haunting flute solo composed by director Ennio Morricone for the 1986 film The Mission. Deb is also PECB music librarian, a role that allows her a break from her day job as bursar in the financial office at UW Whitewater. **Ellie Hawes** is PECB lead saxophone player, KMB saxophone, and frequent soloist on band sax features like Cool Blues for Saxophone, Saxsational, Rocka-My-Sax, and tonight's sultry jazz standard for saxophone, Harlem Nocturne. While Deb is a music librarian, Ellie is a librarian of every kind of media. You may recognize her as library assistant at Palmyra's Powers Memorial Library on Main Street!



**Ed Pierce, Director/Conductor/Vocalist.** Ed Pierce has directed the Palmyra-Eagle Community Band since 1994, the year after its founding. He is a 1971 graduate of WSU Whitewater with a B.S. in Music Education. In 2003 he was inducted into Wisconsin Band Masters Association., and in 2004 he was inducted into Phi Beta Mu Professional Band Directors Fraternity. He was Lebanon Band Director for 35 years, and 2011 winner of John Philip Sousa Foundation award for "Most Historic Community Band" with the Lebanon Band. He's been a guest conductor in 5 states, as well as soloist on four recordings of the 1st Brigade Band--Watertown, WI, an organization which performs on original antique instruments at historical events and community celebrations all over the state. Ed is an historian of military music and was President of Heritage Military Music Foundation for 9 years, Soloist for Time-Life Music Civil War Treasury Collection., and guest speaker and soloist for the Governors Reception for the Lincoln Bicentennial at the Executive Mansion in Madison, Wisconsin. Locally, he is founder of "The Harmony Cornet Band" for Old World Wisconsin and also directs specialty music programs for Old World. He directs the St. Paul's Lutheran School Band in Fort Atkinson, and has inspired many 5-8th grade students to strive for musical excellence, as well as inspiring us "old students" at the PECB!

**The Eagle, Wisconsin Historical Society**  
**& Palmyra Eagle Community Band**

*proudly present...*

**CREAMS, CAKES,  
AND CABARETS**

***"Mr. ED" PIERCE, DIRECTOR***

***"Kimbirdlee" (Kimberly Fadner), VOCALIST***

***Our Star Spangled Opening***

**The Great Race March.....Henry Mancini  
Fanfare & The Star Spangled Banner**

***ON WITH THE SHOW!***

**76 Trombones.....Meredith Willson**

76 Trombones is the highlight selection from Meredith Willson's 1957 musical "The Music Man." Professor Harold Hill uses the song to inspire the people of "River City" to dream big regarding their marching band. In Willson's hometown of Mason City, Iowa, 76 trombones hang from the ceiling of a building in "Music Man Square" in honor of their hometown composer.

**The Syncopated Clock.....Leroy Anderson**

Leroy Anderson was born of Swedish parents in Boston, studied languages at Harvard and almost became a linguist. Listeners and bands, including ours, are glad he switched to music in college! Anderson is famous for his Christmas piece Sleigh Ride, with its unmistakable percussion "whip crack" and horses "whinny" by muted trumpet. The PECB plays Sleigh Ride at every Christmas concert (including this year's on Sunday Dec 1, 2013), and it has also performed other Anderson selections, including The Irish Suite, Blue Tango, and A Christmas Festival. Anderson wrote The Syncopated Clock when he was a Captain and Chief of the US Army Scandinavian Department of Military Intelligence in 1942-1945. It was the theme for the CBS program "The Late Show" for more than 25 years.

**I'm Always Chasing Rainbows.....Harry Carroll**

The 1918 Vaudeville song "I'm Always Chasing Rainbows" has a melody based on Chopin's Fantasie-Impromptu. It has been performed by Charles Harrison (1918 hit version), Harry Fox, The Dolly Sisters, Judy Garland in "Ziegfeld Girls," Perry Como, Tony Bennett, Bing Crosby and dozens of other well-known artists.

***Kimberly Fadner – "KIMBIRDLEE" & THE KETTLE MORaine BLUES"***

***Can't Help Lovin' Dat Man Of Mine.....Arr. Jim Neist***

PECB composer and lead trumpet Jim Neist arranges the Kern & Hammerstein classic from the 1927 musical Showboat. "Can't help lovin' dat man" was made famous by torch singer Helen Morgan in the 1920s and later performed by artists as various as Ella Fitzgerald, Ava Gardner, Lena Horne, Sandi Patty, and Barbra Streisand.

***What I Did For Love\*.....Deb Gilbert, keyboard***

***The Sun and I.....Arr. Jonathan Fadner***

## **Band**

### **Gabriel's Flute.....Ennio Morricone**

*Deb Gilbert, flute soloist*

Morricone's "Gabriel's Oboe" is the main theme for the 1986 film "The Mission," whose soundtrack was nominated for an Academy Award and won a Golden Globe for the best original film score of 1986. In the film, Jesuit Father Gabriel plays his oboe next to a huge South American waterfall, to befriend the Guarani natives and begin his missionary work among them. His oboe-playing saves Gabriel's life, but the Guarani chief is angry and breaks the oboe instead. Today, Deb Gilbert plays the original oboe melody on flute--hence our title "Gabriel's Flute"

### **Harlem Nocturne.....Earl Hagen**

*Ellie Hawes, sax soloist*

"Harlem Nocturne" is a jazz standard written by Earle Hagen and Dick Rogers in 1939. The song was adopted by bandleader Randy Brooks the next year as his theme song. "Harlem Nocturne" has been frequently recorded. Artists include the Glenn Miller Orchestra, Bill Haley and His Comets (performed live), The Lounge Lizards, Duke Ellington, Harry James, Earl Bostic, King Curtis, Anton Szandor LaVey, Herbie Fields, Willy Deville, David Sanborn, and guitarist Danny Gatton The song peaked at #39 on the Billboard Hot 100 chart in 1966 for The Viscounts. The song begins 'Misterioso' and features an alto saxophone solo.

## **"Please welcome back KIMBIRDLEE"**

### **"Mein Herr Marquis" .....Arr. Jim Neist**

Adele, the maid, in Johann Strauss II's operatta Die Fledermaus sings this song, what is often called "The Laughing Song", to "Mein Herr Marquis" (Herr Eisenstein) because throughout the song she is laughing at the "Funny Situation" that is at the heart of this comic opera: her master at a masked ball unknowingly flirting with both his masked wife, pretending to be a Hungarian countess, and herself, his masked maid, pretending to be an actress. Even though the masked ball is a trap set by Eisenstein's nemesis "The Bat" (Fledermaus = "Flying Mouse"), and the main character ends up in jail temporarily, the ending is a happy one.

### **I Dreamed A Dream.....Adapted by Ed Pierce**

PECB director/composer/performer Ed Pierce adapts the Claude Michel Schonberg piece from the music Les Miserables that has been performed by numerous artists, most famously by Susan Boyle for the British reality tv series *Britain's Got Talent*. The album was the fastest selling debut album of all time in the UK and sold 700,000 copies in the first week in just the US, breaking the record for the highest debut ever for a solo female artist

### **Moon River.....Henry Mancini**

### **Don't Sit Under the Apple Tree.....Lew Brown**

Duet with Kim's father, Bob Miller

## **Band**

### **Comedy Classics.....Paul Murtha**

*Happy Days, Beverly Hillbillies, The Brady Bunch, Bewitched, The Addams Family, I Love Lucy*

**Armed Forces On Parade + Our Director**

# Thanks to our Compact Disc Sponsors!

Medal of Honor



Distinguished Service Cross



**Ed Pierce & Nancy Campbell**

Silver Star



**Childhood Autism Treatment Team**

Purple Heart



**Heckel Tool & Mfg. Corp, Eagle WI**  
**Hilda Campbell**  
**True Value Hardware, Palmyra WI**  
**Zero Zone, North Prairie WI**  
**Lockwood & Associates Funeral Homes & Crematory**  
**Gwenn Zerull**  
**Deb and Bernie Gilbert**  
**Joyce Becker**  
**Faye & Derrayl Brugge**  
**Jim & Gina Neist, *In Memory of Albert Pitts and John Neist***  
**Val & Roger Cole**  
**Pat and Connie Sukowski**  
**Green Bay Packer Raffle**  
**Robert J. Miller**

Service Medal



Jean Cisler  
 Barbara D. Jatzak  
 Banco LLC  
 Cindy & Bill Holcomb  
 Eagle Lioness Club  
 Maney Motors, Palmyra WI  
 Old World Wisconsin, Eagle WI  
 Hot Rods Bar and Grill, Palmyra WI  
 White House of Music--Music Cafe, Mukwonago WI

## **FLUTE**

Faustina Jones  
Caitlin Gamble  
Deb Gilbert  
Kelley Haddon  
Erika White

## **CLARINET**

Faye Brugge  
Bonnie Kegler  
Warren Metzger  
Connie Sukowski

## **BASS CLARINET**

Gina Neist  
Kathy Sudbrink

## **SAXOPHONE**

Kristine Dexheimer  
Kim Griffin  
Ellie Hawes  
Kelly Isaacsen  
Yvonne Marie  
Paul Brady

## **TRUMPET**

Nancy Campbell  
Jeff Hawes  
Jim Neist  
Barb Sekula  
Jeff Teuteberg

## **FRENCH HORN**

Jody Garber  
Pattie Jaeger  
Wendy Lucht  
Gwenn Zerull

## **BARITONE**

Valerie Cole  
Bob Miller

## **TROMBONE**

Chelsea Kienitz  
Todd Kienitz  
Sonja Pluess  
Tom Stanley

## **TUBA**

Jim Nelson  
Wayne Craig  
Mike Rubingh

## **PERCUSSION**

Ethan Dexheimer  
Bernie Gilbert  
Melodie Haddon  
Elaine Ledrowski  
Margo Kurth



Palmyra-Eagle Community Band director Ed Pierce shows off the new PECB Compact Disc 'The 40's: A Sentimental Journey' and receives the Wisconsin Honor Flight Service Medallion (pictured above, at right) from Mark Grams, Dodge County Veterans Service Officer. The Stars and Stripes Honor Flight organization brings Wisconsin WWII and Korean War Veterans to Washington DC to be honored in a ceremony and to visit the National World War II Memorial. The Honor Flight Service Medallion is only given to special supporters of the Stars and Stripes Honor Flight. The Palmyra-Eagle Community Band's new CD "The 40's: A Sentimental Journey" was chosen as a special "mail call" item for these veterans on their Honor Flight. The Palmyra-Eagle Community Band has also been invited to General Mitchell Airport to play a reception for a returning Honor Flight on Saturday, September 21, 2013.

### Join us for our remaining 2013 public performances!

- **Jefferson Summer Concert, Friday July 19, 2013 at 7 p.m. (see web for loc)**
  - **Palmyra Park Concert, Monday August 5, 2013 at 7pm**
  - **PUMC Spaghetti Dinner, Monday September 16, 2013 at 5-7pm**
- **Honor Flight Reception, Saturday September 21 at ~7-9pm (see web for loc)**
  - **Annual Christmas Concert, Sunday December 1 at 7pm (PUMC)**

The Palmyra-Eagle Community Band would like to send special thanks to the Eagle, Wisconsin community for hosting us, the Eagle Historical Society and Elaine Ledrowski for sponsoring our concert, and to Kimbirdlee for her dazzling vocal contributions. For more on our featured artist today see: [www.kimbirdlee.net](http://www.kimbirdlee.net); [www.facebook.com/kimbirdlee](http://www.facebook.com/kimbirdlee), [www.kimbirdlee.blogspot.com](http://www.kimbirdlee.blogspot.com), and <http://www.youtube.com/user/kimbirdlee>

For questions, information, or to book a concert date, contact PECB President, Connie Sukowski at 262-485-2069 or e-mail: [cjandptsukowski@gmail.com](mailto:cjandptsukowski@gmail.com); or Director, Ed Pierce, at 920-563-5202 or email: [elpnac@compufort.com](mailto:elpnac@compufort.com). For more about the PECB see our website: **WWW.PECB.INFO**